



Sri Sarada College for Women

(An Autonomous Institution)

(Reaccredited with “A” grade by NAAC)

Institution included u/s 2(f) and 12(B) of UGC

Affiliated to Manonmaniam Sundaranar University

(A branch of Sri Ramakrishna Tapovanam, Tirupparaithurai)

**Ariyakulam, Tirunelveli Thoothukudi –High Road, Maharaja Nagar Post,
TIRUNELVELI- 627011.**



Criterion VII

7.1 Institutional Values and Social Responsibilities

7.1.3 Waste Management

2024-25



SRI SARADA COLLEGE FOR WOMEN (AN AUTONOMOUS INSTITUTION)

(Affiliated to Manonmaniam Sundaranar University, Tirunelveli)
Institution recognised u/s 2(f) and 12 (B) of UGC & Reaccredited with A grade by NAAC
(A branch of Sri Ramakrishna Tapovanam, Tirupparaithurai)
Ariyakulam, Thoothukudi NH, Maharaja Nagar Post,
TIRUNELVELI-627011



E-mail: srisaradatvl@gmail.com Website: www.srisaradacollege.org

a. SOLID WASTE MANAGEMENT- VERMI-COMPOSTING



Latitude: 8.7161316666°, Longitude:77.790035°

The college adopts effective solid waste management through vermicomposting, using exotic earthworm species like *Eisenia foetida* and *Eudrilus eugeniae* to produce organic compost.


PRINCIPAL
SRI SARADA COLLEGE FOR WOMEN
(Autonomous)
TIRUNELVELI - 627 011




Coordinator - IQAC
Sri Sarada College for Women (Autonomous),
Tirunelveli-627 011



SRI SARADA COLLEGE FOR WOMEN (AN AUTONOMOUS INSTITUTION)

(Affiliated to Manonmaniam Sundaranar University, Tirunelveli)
Institution recognised u/s 2(f) and 12 (B) of UGC & Reaccredited with A grade by NAAC
(A branch of Sri Ramakrishna Tapovanam, Tirupparaithurai)
Ariyakulam, Thoothukudi NH, Maharaja Nagar Post,
TIRUNELVELI-627011




E-mail: srisaradatvl@gmail.com Website: www.srisaradacollege.org

b. LIQUID WASTE MANAGEMENT



Latitude:8.7161316666°, Longitude:77.790035°

As part of green initiatives, integrated fish farming is used to recycle wastewater, enhancing ecological balance on campus.


PRINCIPAL
SRI SARADA COLLEGE FOR WOMEN
(Autonomous)
TIRUNELVELI - 627 011




Coordinator - IQAC
Sri Sarada College for Women (Autonomous),
Tirunelveli-627 011



SRI SARADA COLLEGE FOR WOMEN (AN AUTONOMOUS INSTITUTION)

(Affiliated to Manonmaniam Sundaranar University, Tirunelveli)
Institution recognised u/s 2(f) and 12 (B) of UGC & Reaccredited with A grade by NAAC
(A branch of Sri Ramakrishna Tapovanam, Tirupparaithurai)
Ariyakulam, Thoothukudi NH, Maharaja Nagar Post,
TIRUNELVELI-627011



E-mail: srisaradatvl@gmail.com Website: www.srisaradacollege.org

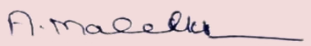
c. BIO MEDICAL WASTE MANGEMENT



Bio-chemical waste is disposed of in a proper and regulated manner, away from student-accessible areas, in accordance with safety


PRINCIPAL
SRI SARADA COLLEGE FOR WOMEN
(Autonomous)
TIRUNELVELI - 627 011




Coordinator - IQAC
Sri Sarada College for Women (Autonomous),
Tirunelveli-627 011



SRI SARADA COLLEGE FOR WOMEN (AN AUTONOMOUS INSTITUTION)

(Affiliated to Manonmaniam Sundaranar University, Tirunelveli)
Institution recognised u/s 2(f) and 12 (B) of UGC & Reaccredited with A grade by NAAC
(A branch of Sri Ramakrishna Tapovanam, Tirupparaithurai)
Ariyakulam, Thoothukudi NH, Maharaja Nagar Post,
TIRUNELVELI-627011



E-mail: srisaradatvl@gmail.com Website: www.srisaradacollege.org

d. E- WASTE MANAGEMENT



E-waste generated on campus is periodically collected and safely disposed of through authorized, government-approved vendors to ensure environmental compliance.


PRINCIPAL
SRI SARADA COLLEGE FOR WOMEN
(Autonomous)
TIRUNELVELI - 627 011




Coordinator - IQAC
Sri Sarada College for Women (Autonomous),
Tirunelveli-627 011



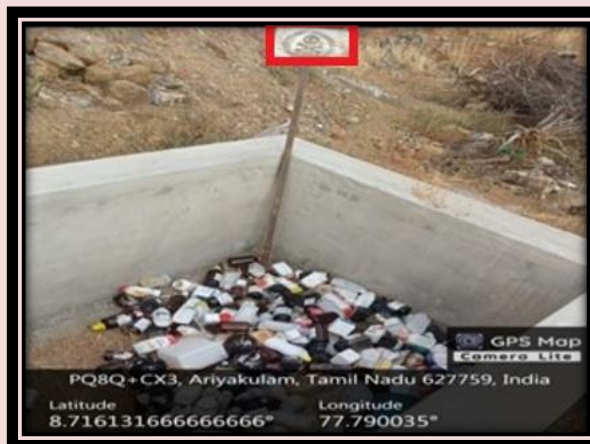
SRI SARADA COLLEGE FOR WOMEN (AN AUTONOMOUS INSTITUTION)

(Affiliated to Manonmaniam Sundaranar University, Tirunelveli)
Institution recognised u/s 2(f) and 12 (B) of UGC & Reaccredited with A grade by NAAC
(A branch of Sri Ramakrishna Tapovanam, Tirupparaithurai)
Ariyakulam, Thoothukudi NH, Maharaja Nagar Post,
TIRUNELVELI-627011



E-mail: srisaradatvl@gmail.com Website: www.srisaradacollege.org

e. HAZARDOUS CHEMICAL WARES



Latitude: 8.7161316666°, Longitude: 77.790035°

Hazardous chemicals and laboratory waste are safely collected and disposed of in a designated pit, following proper environmental and safety protocols to prevent contamination and ensure campus safety. (As on date there is no radioactive materials in our campus)


PRINCIPAL
SRI SARADA COLLEGE FOR WOMEN
(Autonomous)
TIRUNELVELI - 627 011




Coordinator - IQAC
Sri Sarada College for Women (Autonomous),
Tirunelveli-627 011



SRI SARADA COLLEGE FOR WOMEN (AN AUTONOMOUS INSTITUTION)

(Affiliated to Manonmaniam Sundaranar University, Tirunelveli)
Institution recognised u/s 2(f) and 12 (B) of UGC & Reaccredited with A grade by NAAC
(A branch of Sri Ramakrishna Tapovanam, Tirupparaithurai)
Ariyakulam, Thoothukudi NH, Maharaja Nagar Post,
TIRUNELVELI-627011



E-mail: srisaradatvl@gmail.com Website: www.srisaradacollege.org

f. WASTE WATER RECYCLE



Wastewater (domestic waste, kitchen waste and other miscellaneous waste) from the campus is treated and directed to the *Neer Vazham* pond as part of an eco-friendly water management system, supporting groundwater recharge, aquaculture and sustainable environmental practices.


PRINCIPAL
SRI SARADA COLLEGE FOR WOMEN
(Autonomous)
TIRUNELVELI - 627 011




Coordinator - IQAC
Sri Sarada College for Women (Autonomous),
Tirunelveli-627 011